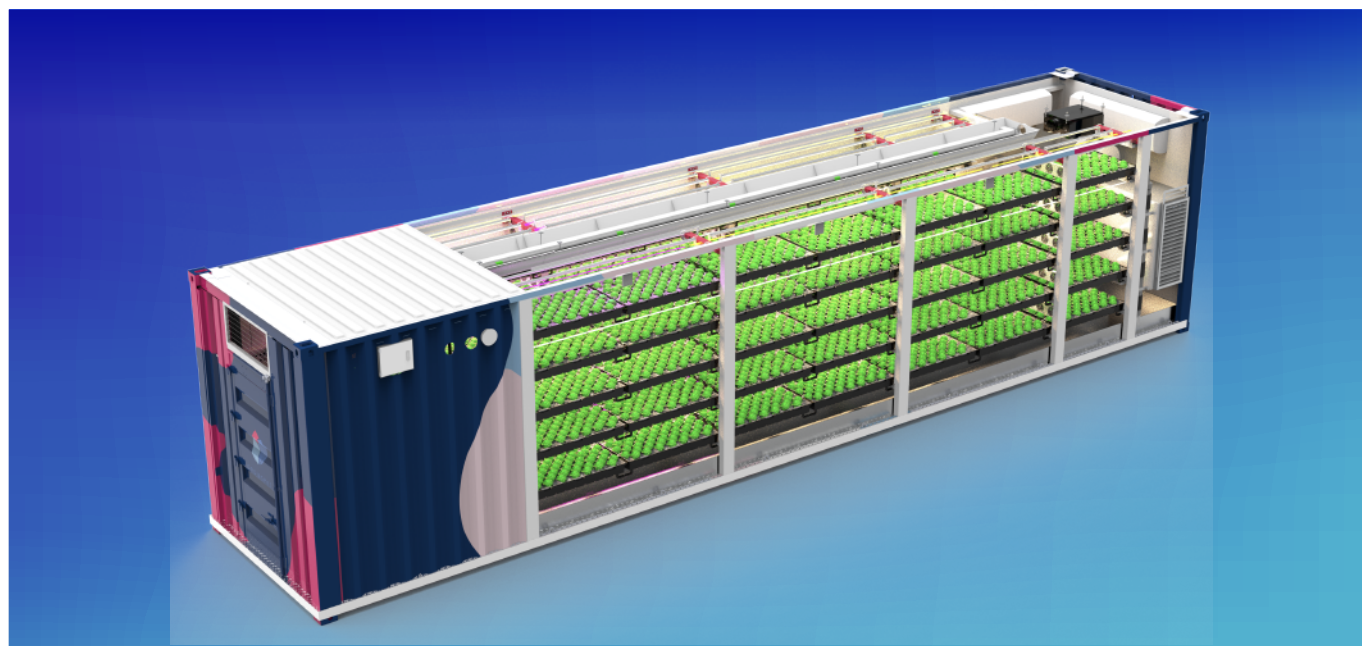


# Container Farm

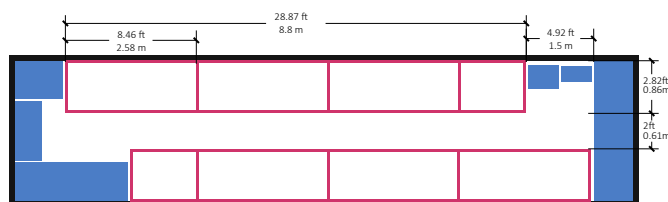
Clone/Vegetable/Seeding/Microgreen

CF-VAX Series

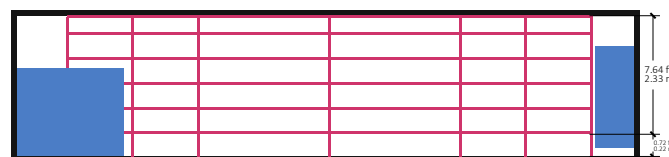
Technology With Respect to Nature.



**40' HQ** Containers Overall External Dimensions : 12.192x2.438x2.896 m / 40x8x9.5 ft



Top View

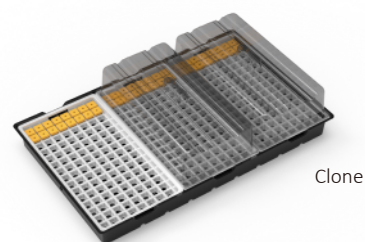


Side View

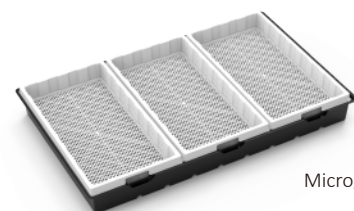
## Specifications

Model	CF-VAX
Max. Input Power	27.5KW
Max. Dehumidification	240L/Day(634Pints/day)
LED Grow Light	BS240W x 35pcs
Max.PPFD @30cm (1ft)	350 $\mu\text{mol}/\text{s}.\text{m}^2$
Planting Tiers	5
Grow Stage	Clone/Vegetable/Seeding
QTY of Grow tray	70 (75cm x 120cm)
QTY of Plants	25,200 clone/3150 lettuce/9450 leafy green(baby leaves)
Canopy Area/Irrigation	63m <sup>2</sup> (700 sq ft) /aeroponic
Chiller	1.5HP
Inner Space	1,198cm(L) x 230cm (W) x 264cm(H) / 472"x 90.5" x 104"
Corridor Width	62cm/24.4 inch
Maximum A.C capacity	72,000 BTU(2pcs x 4HP)
Sterilization rate of internal air	15 times/hr
Sprinkler head	3 pcs
Controllable Temp. Range	16°C- 30°C
Input Voltage/Frequency	220V 50/60 Hz.
Reservoir Capacity	680L(180 us gal)
Dosing System	4 channels
Light Dimming Range	0-100% / 0-10V

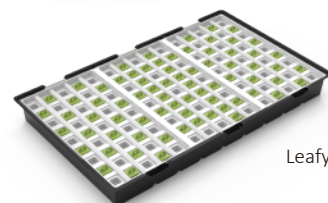
## Planting Container



Clone



Microgreen



Leafy Green